

MEKERENE WHENUA WHAKAMOEMITI



The Iwi o NgaiTakoto recently celebrated the return of land known as Mekerene on Saturday 18th October at Wharemaru, Kaimaumau - initially taken from NgaiTakoto by the Crown in 1857 through a supposed "Crown purchase".

The Crown purchased Muriwhenua South block of some supposed 25,000 acres and the Wharemaru Block (3,000 acres) for \$1,500 pounds in 1857. The acreage was later recorded by the crown as being 87,000 acres for the Muriwhenua South Block and 13,555 acres for the Wharemaru Block. NgaiTakoto did not sell these lands. The Crown therefore assumed ownership of 13,550 acres of NgaiTakoto land at Wharemaru, Kaimaumau.

Rangitane, CEO & lead negotiator for Te Runanga O NgaiTakoto has said, "the land in question has been subjected to a Treaty Claims process for many years and we have sought the lands return back to the NgaiTakoto Iwi since the early 90's because of what it means to our people whom reside in the community of Kaimaumau and NgaiTakoto Iwi as a whole".

Extensive discussions, negotiations (and even an occupation) have all contributed and evidenced the Iwi's desires over those past decades to achieving a resolution in the quest for the land to be returned back to NgaiTakoto and Saturday proved just that, a historical

moment for NgaiTakoto Iwi which saw whanau and friends come together.

Karakia was conducted by Anglican and Ratana Ministers and in korero following special mention was made to those who led the initial claim, Laddie and Harriet Cook and Matua Whare Mehana.



Little Emeralds Journey



Figure 1: Mahalia & Emerald

Meet Emerald Tuhiwai-Polson, a free-spirited, larger than life 6 year old girl who with her mother, Mahalia Polson are on a mission to help raise money to get her a cochlear implant. Great Granddaughter of the late Maori and Jane Marsden - parents of the late Hiraina Marsden - this little

girl certainly boasts big smiles when it comes to being surrounded by whanau. Emerald was diagnosed with having Profound Bilateral hearing loss in May 2011. This means she has the most severe degree of hearing loss before complete loss in both ears. In August 2011 she was implanted on the left ear, which was the worst of the two (NZ Govt at that time only funded one ear).

From that point onwards Mahalia says "Emeralds life changed completely" - "It was absolutely amazing, with the help of family, rehabilitation staff and teaching staff, Emerald has come leaps and bounds with her language and learning" - That was up until a couple of months ago, Emeralds learning, behavior and hearing has been on a downward spiral. After numerous amounts of observations, testing and specialist appointments it's been discovered that Emerald has a soft failure with her Cochlear Implant.

This means she will need surgery again to re implant a new one (as this is not repairable). The implant is set to be replaced at the end of November when Emerald will also have the opportunity to get a second implant at a hugely discounted cost - \$37,000 instead of \$60,000.

Mahalia said she needed to raise the \$37,000 herself in just seven weeks because Emerald didn't qualify under new legislation for a free second implant. Government funding, introduced on July 1, gives two implants to under-19s that are newly diagnosed as needing them, or for children under 6 who already have one implant, which unfortunately meant that Emerald does not qualify, turning 6 just 3 months before the new law changed.

She is an amazing little girl who leaves a lasting impression on everyone who meets her. Her mum believes a second implant will improve her quality of life most considerably.



Mahalia says, she knows the \$37,000 procedure is a huge amount to raise in a really short time frame, "But nothing is impossible.

Emerald proves that theory everyday".

Emerald and her whanau thank everyone who has donated to help fund her operation - Every little bit counts. To donate towards emeralds operation visit her givealittle page at: www.givealittle.co.nz/cause/emeraldsnewear.



Figure 2: Olivia Whitehouse (Right)

- OLIVIA WHITEHOUSE - Receives 2014 ASG National Excellence in Teaching Award

Olivia Whitehouse has been selected as one of 60 teachers across Australia, to receive a 2014 ASG National Excellence in Teaching State and Territory Award. She has been working at Manchester Primary School - Mooroolbark since 2008, and over a number of years has been one of many to make a difference within her school - being part of diverse school teams winning numerous amounts of awards such as:

- **Resource Smart School for 2010**
- **Water Smart School Award 2010**
- **Winner of Statewide Water safety program promotion 2012**
- **Winner of 2012 Recycle Right Video competition**
- **Winner of the 2013 Water Safety Promotion school statewide competition**

Olivia herself won the *Origin Energy Award* on behalf of her school in 2011, which was \$1000 along with items to reduce energy power wastage for Manchester Primary School. Olivia went on to win the *Marathon for teachers* the following year, her class group won the *Yarra Valley National Water Film Competition* also that same year.

She has been a mentor and coach to students who have successfully won first prize competitions with one parent praising Olivia for the efforts she has put into supporting and encouraging her son Jared – who won Statewide National Water Saving poster competition – Olivia received an email from Jared’s mother saying as a parent she is utterly thrilled to have had Olivia teach all her children and feels their learning at primary level, with Olivia’s teaching and guidance, has most definitely enriched them as both students and individuals.

Olivia will be presented her ASG National Excellence in Teaching award and certificate at Manchester Primary School. The presentation will provide an opportunity for her school and/or community to also be involved in the celebration.

Te Make Farm - Bore Monitoring -

NgaiTakoto were granted Resource Management consent by council to take on responsibility of managing the water at Te Make farm and have done so since October 2013. Part of the resource consent conditions require water levels be monitored every month and water quality be tested every 3 months. 10 bores are monitored within this time by Kaio Hooper who leads our Environmental Asset Management team. As part of the on going PSGE (Post Settlement Government Entity) succession planning of NgaiTakoto, interested members are able to see first hand the type of work that is undertaken within our Rohe by volunteering a couple of hours a weekend. The farm is situated in Kaitiaki to Awanui and is managed by Mark and Serena (Job) Johnson of Landcorp Farms Ltd. The farm was a finalist in 2013 and recognized as one of the best suppliers of Dairy. To volunteer for Kaitiaki support email your interest to Kaio@ngaitakotoiwi.co.nz or call the office toll free on 0508 TAKOTO (825 686)

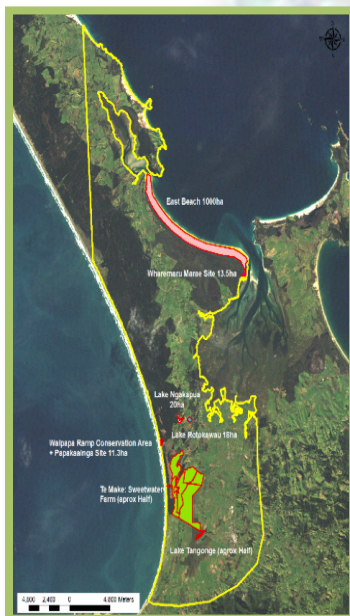


Figure 3: Te Make Farm



Figure 8: Karaka Marsden & Mangu Awarau



Figure 4: Measuring the bores



Figure 5: 2014 Landcorp Sweetwater Finalist



Figure 6: Mark & Serena Johnson



Figure 7: Kaio Hooper

NGAITAKOTO FESTIVAL 2014

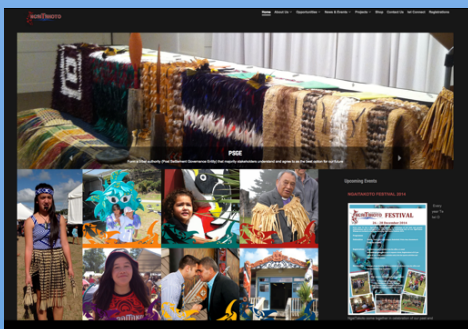


Kia ora Whanau, a reminder that we have our Festival on the 26 – 28 December, please note that closing date for registrations is the 5th of December.

Registering is important as it enables you to participate in the 3-day event. To register contact the office on our Toll free number 0508 - TAKOTO - 825686 or email festival@ngaitakotoiwi.co.nz

VISIT US:

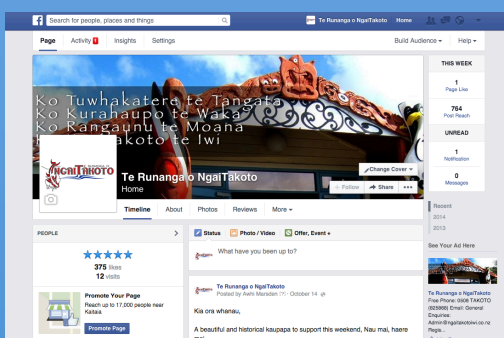
www.ngaitakotoiwi.com



OR:



@ Te Runanga o Ngaitakoto



Nau mai ki tēnei ao



Introducing these taonga of Ngaitakoto, congratulations to the parents and whanau of these precious little blessings.



Keirah Maria Barber Hunt
Born: 11/10/2014
Weight: 7lbs 7oz
Parents: Erina Barber & Dylan Hunt



Jayden Roger Pivac
Born: 09/09/2014
Weight: 7lbs 1oz
Parents: Jamie Clarke & Dominic Pivac



Karn Robin Mark Kingi
Born: 07/07/2014
Weight: 9lbs 8oz, 55cms
Parents: Katie & Darin Kingi



Maia Te Aupouri Marsden
Born: 10/06/2014
Weight: 7lbs 7oz, 53cms
Parents: Wiremu Marsden & Marie Nathan

If you have any queries regarding this terms Panui or you have news/updates that you would like featured in our next Panui email: Awhirangi Marsden - awhi@ngaitakotoiwi.co.nz