

Nga Taonga o NgaiTakoto
Pepi of the Month, Each issue we feature our
babies of NgaiTakoto.
This month we welcome Reef Bailey-Kelly



Reef Wairua Bailey- Kelly

Born: 13/03/2016

Weight: 7lbz 2oz

**Parents: Kimberly Bailey &
Matthew Kelly**

TE RUNANGA O NGAITAKOTO

Free phone: 0508 TAKOTO (825686)

Phone: (09) 408 0271

Fax: (09) 408 0251

e: admin@ngaitakotoiwi.co.nz

16 Matthews Avenue Kaitaia
PO Box 262
Kaitaia 0410

www.ngaitakotoiwi.co.nz



Find us on:
facebook®

www.facebook.com/ngaitakotoiwi

*If you have any queries regarding this terms Panui
or you have news/updates that you would like
featured in our next Panui email: Awhirangi
Marsden - awhi@ngaitakotoiwi.co.nz*

Pioke Panui



Mauri tū mauri ora

*An active soul is a
healthy soul...*

Destined for Digital Design

NgaiTakoto Runanga takes a look at descendants reaching out to pursue their dreams and aspirations whilst furthering their education. This month the Runanga made contact with Keri Richardson, Grandson of Asa & Katie Puata (Nee Paraone) who embarked on a journey at Auckland's AUT, gaining a Bachelor in Digital Design.

As a student at Manurewa High School, Keri says he was always good at art and thought it would be a good career to get into, and so in 2010 he enrolled at the University of Auckland to make that passion become a reality. Last year he was a recipient of Te Runanga o NgaiTakoto's Scholarship Awards where he received the Hiraina Marsden – Pursuit of Creative Arts Scholarship for 2015. He also went on to be awarded the NgaiTakoto Education Award at the Sweetwater festival that same year.

His future aspirations include one day owning his own business creating Maori digital art and visual effects – “I want to become fully immersed in Te Reo Maori and connect back with my whenua”.

The drive to complete his studies would not have been made possible without the support of his Whanau who have encouraged him to persevere to the end, mentioning that the love and support they have shown has made the journey all the more worth it. He says being awarded the scholarship took a lot of pressure off of him (financially) to focus solely on his studies. We congratulate him and wish him well with his future aspirations.



Lake Ngatu – Home to Sweetwater Festival

Boasting a picturesque view, NgaiTakoto whanau once again coming together to celebrate another year of success for 2015. Held at a new venue, Lake Ngatu hosted families and participants who came to enjoy what the day had to offer.

With sports catering to all levels and ages the morning was off with a hit as basketball players took to the court to represent their Marae. New colours and designs to 2015 uniforms attracted the delight of players, aiming to represent their Marae with pride.

Netball, league and softball were but some of the sporting events played out that day, with the Lake playing host to water activities such as Waka Ama and kids splash'n dash later on that evening. Tamariki we're also able to enjoy the mini hot rod cars and giant bouncy castles – new activities seen at the festival.

With sporting events underway well into the evening, festivalgoers were able to enjoy top town events that not only tested participants endurance and strength but also their sportsmanship when it came to competing against rivals.





Whanau were catered to with a delicious spit roast with all the trimmings and dessert while enjoying the awards evening. Up and coming Kawana Marsden (Mahimaru Marae) taking away sportsman of the year for 2015 - he was also selected to trial with the Warriors U21 team, that same year. Waimanoni wahine Hinerangi Waikai swooping up the sportswomen of the year - she too having a eventful year competing in the boxing fundraiser at Te Ahu in November as well as numerous other events - with top place for the 2015 festival going to Mahimaru Marae.

Following on from the awards whanau were given a night of lakeside entertainment from the young and talented Majic Paora and also Tribal connections – who performed at the very first NgaiTakoto festival in 2012.

The concept of having an all outdoors event allowed whanau to enjoy a change of scenery as well as admire ancestral lands that had been returned back recently as part of the Iwi's treaty settlement.

The festival took place over one day rather than the three days seen during the previous years with 2017 set to be an even bigger event as the festival becomes biyearly, a majority decision made by the trust's shareholders who felt it was more convenient for all parties.



Achievements Awards For 2015:

These awards recognize outstanding NgaiTakoto achievements.

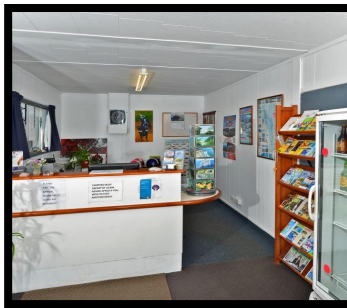
Sportsmen Of The Year for 2015:
Kawana Marsden

Sportswomen Of The Year for 2015:
Hinerangi Waikai

Educational Award for 2015:
Keri Richardson

Environmental Award for 2015:
Kaio Hooper

*Nomination forms are available on request



20 Year Goal now a NgaiTakoto Reality: 90 Mile Beach Park

Twenty years ago the desires of the NgaiTakoto negotiations group was to achieve a purchase of the 90 Mile Beach Top 10 Holiday Park. At that time it was owned by Tony Brljevic and famous for hosting the world famous 90 Mile Fishing competition and Sunday dinner roast's (Lamb on a Spit).

After a number of years (and change of owners) the Park has been finally purchased by Te Runanga O NgaiTakoto as a component of an investment portfolio for the Iwi. Due diligence and building inspections were conducted on the business before the required approval for purchase was given by the board.

It only made sense to the board that the Runanga purchase the property given that it sits squarely within the NgaiTakoto rohe and is in close proximity to Waipapakauri Ramp, Te Oneroa a Tohe, various lakes, including lake Ngatu and border's onto the Te Hiku forest lands owned by NgaiTakoto. 20 acres of land in front of the Beach Park (down to the beach) were negotiated back to NgaiTakoto in the settlement as well, this allows the Runanga the ability to expand the parks facilities if they choose too.

The park - located at one of the gateways to Te Oneroa a Tohe and on the tourist route to Te Rerenga Wairua (Cape Reinga) - is currently managed under a lease agreement to NgaiTakoto, this will give the Runanga time to build capacity and capability and to plan for opportunities that lie ahead in the tourism industry and throughout the Te Hiku region.

The land, just under two hectares, is attractively laid out as a holiday park and camping ground. Holiday accommodation is catered for with units ranging from backpacker style to ensuite cabins, as well as tent sites and powered and unpowered sites.

Facilities include guest kitchen, dining room, laundry and bathrooms, swimming pool, BBQ and playground areas, office and shop.

It is envisaged that employment opportunities will ultimately be created from out of the purchase, the ability to showcase NgaiTakoto Nationally - Internationally, and to provide discounted holiday opportunities for NgaiTakoto members are goals that will be set in place over the coming period.



NgaiTakoto Sign Joint Management Deal Over Dairy Farm



Sweetwater farm managers Sarena Johnson and Mark Johnson, Landcorp chairwoman Traci Houpapa, Hemi Toia (Te Rarawa), and Rangitane Marsden (NgaiTakoto).

Since the 2010 Treaty of Waitangi settlement, Landcorp has been managing Sweetwater in consultation with NgaiTakoto and Te Rarawa Iwi. The farms have developed into what was one of Landcorp's best performing dairy operations, with three dairy units running 2800 cows, as well as a dairy support farm.

Landcorp chairwoman Traci Houpapa described the Sweetwater farm as "one of the jewels in Landcorp's crown". It was a very high performing operation, she said.

Under the new profit-sharing arrangement, Landcorp will provide the farm management expertise, livestock and its latest technologies required to manage the dairy operations.

Under the settlement, NgaiTakoto and Te Rarawa took over ownership of the property on December 17 2015.

The dairy farm and support unit will be run under a joint-management and profit-sharing arrangement between the two Iwi and Landcorp as an interim measure whilst the Iwi look at developing their own respective, longer term farming strategies.

Rangitane Marsden indicated, for NgaiTakoto it will give us a financial return as well as employment opportunities for our people, our farming brand will be identified as **Te Make Farms Ltd** a name that reflects the significance of the area for NgaiTakoto.

Te Runanga o NgaiTakoto look forward to doing business with both Landcorp and Te Rarawa and states more importantly that this farm offers NgaiTakoto people the opportunity to reconnect back to their lands in many different ways, and they will prioritise and capitalise on that.



Educating the next Generation

In its fourth year running over 90 tamariki from Te Rangi Aniwaniwa, Kaingaroa, Oturu and Paparore schools explored the ecosystem of Lake Ngatu at the World Wetlands Day event hosted by Te Runanga o NgaiTakoto.

The event has been in high demand, particularly with the increasing need to look after our waterways, lakes and wetlands,' says Te Runanga O NgaiTakoto's Environmental Manager, Kaio Hooper.

The day was well prepared with fun and interactive activities that allowed the children to get involved, including a study of invertebrates, lake life, habitat and food chain; flora and fauna, water quality, weaving, along with historical cultural korero from NgaiTakoto.

Unfortunately this year didn't include the swimming or snorkeling as previously seen at past wetland day events – the ill-health of the lake allowed the tamariki to observe and understand the importance of caring and protecting lakes and waterways.

NgaiTakoto Runanga are currently working on a lake restoration strategy with the Department of Conservation, they also made good on their promise to prevent the use of powerboats on Lake Ngatu, as part of a plan to restore the ailing Lake to good health.

We also wants to see vehicles kept off lake margins, and has banned the use of soap and liquids. It has long been the practice of some to wash vehicles in the lake after leaving nearby Ninety Mile Beach, which the bollards should prevent, although those who do so have repeatedly been warned that the water does more damage to their vehicles than not being washed at all.





Future Proofing: Our NgaiTakoto People, and Assets

As the transfer of settlement assets comes back to NgaiTakoto (17 December 2015) the need to align that work with the development of the PSGE (Post Settlement Governance Entity) is now becoming a priority for the Iwi. Over the weekend of March 18-21 the Te Runanga o NgaiTakoto Board Trustees, Asset Management persons (Pioke Corporate), members from NgaiTakoto Australia and a number of younger generation gathered to discuss the future strategy for alignment of the Iwi's various post settlement governance entities, and how NgaiTakoto moves forward into the future.



Overlooking the Sweetwater lakes



Te Make Farms - Sweetwater



Kaimaumu Beach Area

The weekend comprised of clarifying Governance/Management roles and responsibilities, Site visits to view the substantial NgaiTakoto Settlement Asset base, (Farms, Forest, coastline etc...) and ongoing discussions about the need for the development of a future 20/40 NgaiTakoto Business plan and within that plan, the development of a future leadership succession strategy. It was a first time opportunity for many who attended to fully understand what it is that NgaiTakoto have as a settlement asset base, and what will be required to manage those assets in the best interests of our NgaiTakoto members.



Lakes on Sweetwater Farm



Dairy Farm Milking Unit



Overlooking Farm Wetlands

The following information identifies the approach that will be taken to developing that longer term strategic NgaiTakoto Business Plan:

The key 3 goals as identified by NgaiTakoto people:

1. Land and identity returned, and protected
2. Education Grants, Training / Scholarships
3. Opportunities and Employment.

The challenges presented were:

What are the **RISKS** to not having a Strategic Response (Plan)

- Nothing changes, no sense of future direction
- Business becomes “ad hoc” and “whimsical”.
- Potential to lose everything that NgaiTakoto have gained in their Settlement
- What happens to the future generations? Potential loss of identity / land protection.
- Expectations of shareholders are “greater” than reality.

(The NgaiTakoto Future is designed by **DEFAULT** not choice)

What are the **BENEFITS** to having a Strategic Response (Plan)?

- If you fail to plan, you plan to fail
- Sets a clear **direction** and forward **focus**
- Clear guidelines with the **ability** to **review** and **adjust**.
- Provides for **clear communication** and **factual** information
- Setting **realistic** objectives, **achieving** long-term goals and **future proofing** a 20/40 NgaiTakoto succession strategy.

(The NgaiTakoto Future is designed by **CHOICE** not default)

Therefore moving forward priorities at this time are:

Process – Action 2016

1. **Identify** each specific asset and how it is to be managed. (**knowing what NgaiTakoto have in detail**)
2. **Using** that information to **strategically plan** or make informed decisions
3. **Guides / informs** the investment strategy and future business plan (PSGE)
4. **Develop** the NgaiTakoto **Business criteria / according to Iwi priorities and values** (Future use)
5. **Identify future skillsets required** and identify gaps in NgaiTakoto. (Better investments/focus).

Benefits

- **Promotes Iwi identity and action**
- **Protects NgaiTakoto land and asset investments**
- **Promotes NgaiTakoto people and enhances future member prospects**

The weekend concluded with a understanding that more work is required to developing the 20/40 strategic plan and that further Iwi/group discussions will be held over 2016 to developing the vision for that plan. That work will be undertaken over the next 8 months and will include the

1. **Review Assets**
2. **Develop Strategic Plans**
3. **Implement Plan of Action**

NgaiTakoto CEO Rangitane gives a big thank you to those who were able to commit the time and energy to the weekend and to the younger generation for their contributions as to how and what you see the future for NgaiTakoto being, in your time.